



# Gainsborough Primary & Nursery School Newsletter

17<sup>th</sup> January 2025

Dear Parents/Carers,

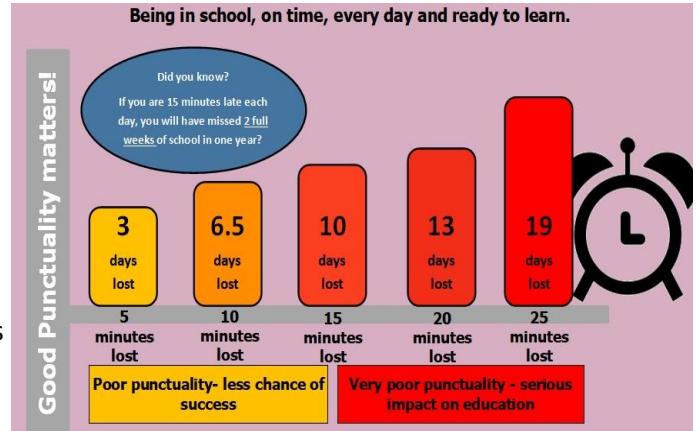
Over the last few months we have seen an increase in the number of pupils who are arriving late to school.

### Arriving on time:

- Sets good habits for life
- Maximises educational achievement
- Helps your child develop friendships and relationships
- Boosts your child's confidence and self-esteem

### Arriving late:

- Puts your child at an immediate disadvantage to other children who have arrived on time
- Means your child misses important information at the start of lessons
- Is embarrassing for your child
- Disrupts lessons for other children
- Can damage your child's confidence and self-esteem



We are therefore asking that all parents/carers ensure that children arrive on time **every** day.

School starts promptly at **8.45** and lessons start at 8.50. Any child arriving after 8.50 is marked as late and is missing the start of their first lesson.

If you are having difficulty getting your child to school on time, please call to speak to one of the attendance team.

We thank you for your ongoing support,

Mrs Nurse

### Attendance and Punctuality



### School Crossing Patrol

The lollipop lady is outside school every morning and every evening to enable both parents and children to cross the road safely.

Please do not cross between parked cars or on blind bends and use the school crossing patrol.

Thank you



### Staff News

Congratulations to Miss Iddenden who was married over the Christmas holidays. She is now Mrs Watson and we wish the happy couple every happiness together from all at Gainsborough.



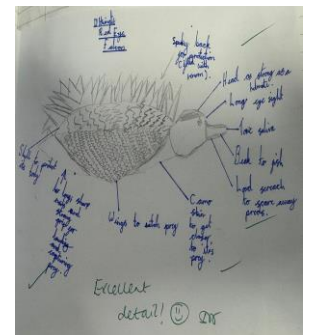
## Year 6

This week, in English, Y6 have been busy creating their very own creature!

Based on our learning in science last half term, the children have designed their animals carefully; considering what adaptations they needed to include in order for it to survive in their chosen environment.

The children have then created facts for their animal relating to: their appearance, diet, habitat and behaviours.

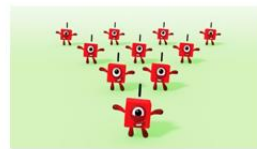
They are now using these to create their own non-chronological report to inform others of their species!



The children in Nursery have been hunting for objects that begin with our sound of the week, b.



Here at Gainsborough, we follow the "Mastering Number" scheme in addition to our maths lessons. We would like to encourage you to share some episodes of "Numberblocks" on CBeebies as these feature in the scheme.



**Numberblocks**  
Series 2, Episode 6: Just Add One

This week in Reception we have been reading "Zog and the Flying Doctors." The children have enjoyed making their own knight's shield.



## Pre-Loved Uniform Sale

On Monday 20<sup>th</sup> January 2025 we are hosting a pre-loved uniform sale after school.

Cash donations only please.



## Clothes Collection

Next week your child will be bringing home some information about a used clothes collection. Any pre-loved, clean clothes you wish to donate will need to be in school the following week.

More details will be sent home next week.





## Cup Winners



- Class 1: Gabriella for settling into Gainsborough so well.
- Class 2: Oakley for settling in at Gainsborough.
- Class 3: Olivia for showing great independence in writing.
- Class 4: Ayat for always using good manners.
- Class 5: Ibrahim for producing a variety of creative sentences during our English sessions this week.
- Class 6: Tilly for her excellent re-tell of the story of Goldilocks.
- Class 7: Fatah for a super effort in phonics lessons. Keep it up!
- Class 8: Kristian for trying really hard in his assessments this week. Well done!
- Class 9: Aiyaan for making an effort to improve his handwriting.
- Class 10: Maria for completing complex multiplication challenge questions at home and getting them all right!
- Class 11: Evie for a fantastic poem about Anglo Saxons.
- Class 12: Isla for trying really hard in her assessments even though they were tricky.
- Class 13: Hani for always trying her hardest in class and for persevering when things get tricky.
- Class 14: Yusuf for excellent effort in lessons and impressing other staff with his oracy skills and manners.



### Attendance

National average Primary School attendance		<b>96%</b>	
Overall school attendance to date		<b>94.54%</b>	
Overall school attendance last week		<b>93.57%</b>	
Nursery Mrs Taylor		<b>94.3%</b>	
Class 1 Mrs Kettle & Miss Eccleston	<b>92.4%</b>	Class 2 Mrs Grocott	<b>91.5%</b>
Class 3 Miss Booth & Mrs Clewes	<b>94.3%</b>	Class 4 Mrs Hampshire	<b>93.2%</b>
Class 5 Miss Gee	<b>100%</b>	Class 6 Mrs Poulson-Green	<b>90%</b>
Class 7 Miss Hitchen & Miss Aitchison	<b>91.4%</b>	Class 8 Miss Lee	<b>86.9%</b>
Class 9 Miss Gough	<b>97.3%</b>	Class 10 Mrs Watson	<b>96.4%</b>
Class 11 Mrs Dewey	<b>94.8%</b>	Class 12 Miss Marshall	<b>96.8%</b>
Class 13 Mrs Kelly	<b>85.7%</b>	Class 14 Mrs Taylor	<b>98.5%</b>

### Dates for your Diary

21 <sup>st</sup> January 8.50-9.20am	Y2 Stay and Read
24 <sup>th</sup> January 8.50-9.20am	N & R Stay and Read
24 <sup>th</sup> January	C7 swimming lessons
29 <sup>th</sup> January 8.50-9.20am	Y1 Stay and Read
29 <sup>th</sup> January 1pm-5.45pm	Y6 Additional Parents' Evening
30 <sup>th</sup> January	Y3 Church visit
3 <sup>rd</sup> February	EYFS Fire Station visit
5 <sup>th</sup> February	Y6 SATs Breakfast Parent Workshop
12 <sup>th</sup> February	Y6 Weaver Hall visit
10 <sup>th</sup> -11 <sup>th</sup> March	Y4 Residential visit

### Gainsborough GRIT and Determination Awards

Class 1	Ranya	Class 4	Harper
Class 2	Lucas	Class 5	Janna
Class 3	Jonah	Class 6	Lumen



### Mrs Nurse's Special Award

- ★ Hanna (c8) for her volcano model completed at home.
- ★ Oskar (c13) for his great non-chronological report.

### Lunchtime Menu - week 1 - w/c 20<sup>th</sup> January 2025

Monday	Tuesday	Wednesday	Thursday	Friday
Quorn Bolognese Jacket Potato	Chicken Tikka Vegetarian Sausage Roll	Sausage & Mash Vegetarian Sausage & Mash	Sweet and Sour Pork Melted Cheese Sub	Fish Fingers Vegetarian Nuggets
Ham / Turkey / Cheese / Tuna available every day				