



# Gainsborough Primary & Nursery School Staying Safe Guide

## Child Sexual Exploitation (CSE)

Child Sexual Exploitation (CSE) is a Key Risk Area within Cheshire East Safeguarding Board's Business Plan, and has recently been an area of major national concern.

**'Sexual exploitation of children and young people under 18 involves exploitative situations, contexts and relationships where young people (or a third person or persons) receive 'something' (e.g. food, accommodation, drugs, alcohol, cigarettes, affection, gifts, money) as a result of them performing, and/or another or others performing on them, sexual activities.'**

Children and young people can be manipulated or forced into taking part in a sexual act either within a seemingly consensual relationship or in return for attention, affection, money, drugs, alcohol or somewhere to stay. They may think the abuser is their friend/ boyfriend/girlfriend or they may be physically or verbally threatened, or be subjected to violence. They also may be controlled, manipulated, and isolated from friends and family.

### Possible signs of CSE

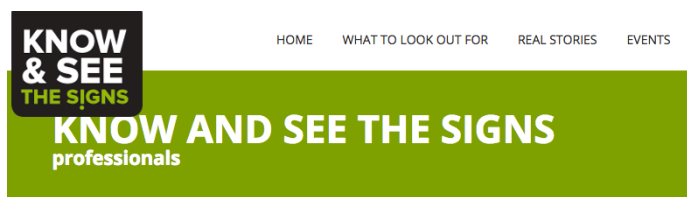
- Going missing for periods of time or regularly coming home late;
- Regularly missing school or education or not taking part in education;
- Appearing with unexplained gifts or new possessions;
- Secretive about e-communications
- Associating with other young people involved in exploitation;
- Having older boyfriends or girlfriends;
- Suffering from sexually transmitted infections;
- Mood swings or changes in emotional wellbeing;
- Drug and alcohol misuse; and
- Displaying inappropriate sexualised behaviour.

### Further information/advice



The easy to navigate website below is full of further information, support and resources for parents, children and professionals.

[www.knowandsee.co.uk](http://www.knowandsee.co.uk)



### Is CSE relevant in Primary Schools?

CSE is potentially a child protection issue for all children under the age of 18 years. Cheshire East uses a screening tool when assessing children at risk that applies to those aged 10 years old and above, but nationally children as young as 8 have been abused in this way. Boys as well as girls are abused through CSE.

#### ADVICE & SUPPORT

Young People

Professionals

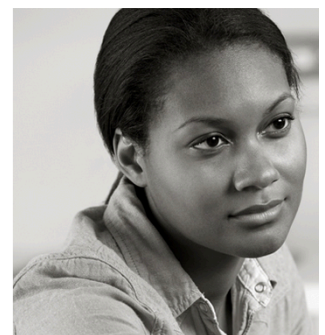
Parents & Carers

Businesses

#### REAL STORIES



READ MY STORY  
By Ella



**LET'S STOP CHILD SEXUAL EXPLOITATION NOW!**